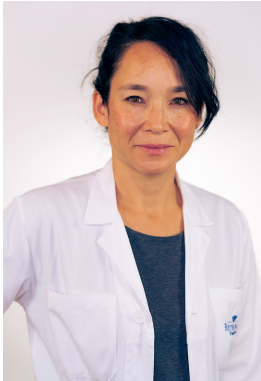




SWISS MEDICAL  
NETWORK



# Rebecca Nakahara

Specialist in anaesthesiology and intensive care medicine, member FMH

---

## Languages

DE,FR,IT

## Work Experience

- since 2016 Specialist in anaesthesiology and intensive care medicine, Privatklinik Bethanien Zurich
- 2014–2016 Head of gynaecology department, Triemli City Hospital
- 2011–2016 Senior Physician, Institute for Anaesthesiology and Intensive Care Medicine, Triemli City Hospital
- 2010–2011 Senior physician at the Institute for Anaesthesiology and Intensive Care Medicine, Triemli City Hospital

## Education

- 2011 Specialist in intensive care medicine
- 2010 Specialist in anaesthesiology
- 2003–2009 Junior doctor in anaesthesia, surgery and intensive care medicine and junior doctor in pre- and clinical emergency services, KSW Winterthur, Zollikerberg Hospital, Triemli City Hospital
- 2002 Federal state examination, University of Zurich
- 1995–2002 Medical studies, University of Zurich

## Memberships

- Swiss Medical Association (FMH)
- Zurich Society for Intensive Care Medicine (ZGI)

## Accreditation

[Privatklinik Bethanien](#)

[Medizinisches Zentrum Haus zur Pyramide](#)

## Specialties

[Anesthesiology](#)

## Contact

**Alphacare AG**

Toblerstrasse 51  
8044 Zürich

T +41 43 268 74 49

[rebecca.nakahara@alphacare.ch](mailto:rebecca.nakahara@alphacare.ch)

[www.alphacare.ch](http://www.alphacare.ch)

[Download vCard](#)

T +41 43 268 74 49

[alphacare@hin.ch](mailto:alphacare@hin.ch)

[Download vCard](#)